



WINTER 2020 NEWSLETTER

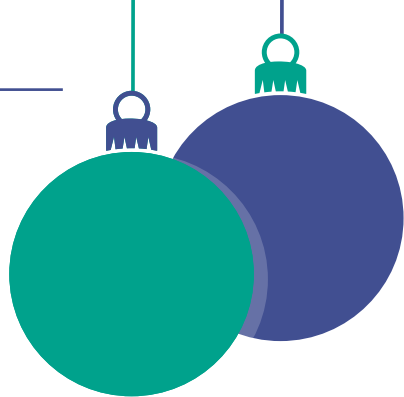
- **End of an Era**
- **Pride of Manchester**
- **Meet our new Registered Manager**

A growing family

Francis House Family Trust
Registered Charity Number 328659



WELCOME TO OUR FAMILY



As we come to the end of 2020 and prepare ourselves for 2021, I'm sure that we will all be glad to leave behind a year dominated by COVID issues and look forward with hope to 2021, the year that will surely see immunisation and an end to restrictions.

At Francis House we do have some regrets as we leave 2020 as November saw the retirement of our 'cover girl' Registered Manager and Director of Care, Gill Bevin. We say goodbye to an amazing leader, a person devoted to outstanding care, who has always put the families first, most of all an exemplary clinician and a role model for all Registered Nurses.

Francis House loses a leader, a nurse a trekker (a "wannabe" singer) and a personality who has changed the Hospice immeasurably over 18 years service. We cannot express our gratitude enough.

2020 also saw the retirement of long-time staff members, Tracey Potts and Ann Edwards. Both have given devoted service over many years. But we now look forward to the promise of a New Year and a new era for Francis House under the leadership of Sharon Doodson (more later).

When I look back over 2020 it is with some pride (not sinful self-satisfaction) but pride in the staff and visiting consultants who have worked in difficult circumstances and conditions to keep the service running through the worst of times. Care team, support staff, doctors, supervisors, pharmacists and consultants have given us the ability to support families, who have been brought to their knees by the restrictions and stresses involved in caring for sick young people during this difficult time.

Our support for them has been made possible thanks to our thousands of generous, dedicated supporters who have continued to provide us with the money needed to stay open and operating effectively. Thank you every one of you.

We leave 2020 behind with mixed feelings and we step into 2021 with hope and trust in God.

In the words of Minnie Haskins used by King George VI in his 1939 Christmas address at the outbreak of war -

'I said to the man who stood at the gate of the year,

"Give me a light that I may tread safely into the unknown"

and he replied, "Go out into the darkness and put your hand into the hand of God, that shall be to you better than light and safer than a known way".'

Keep safe and care for each other.

David

HOW TO CONTACT US

Francis House Children's Hospice,
390 Parrswood Road,
Didsbury, Manchester, M20 5NA

Hospice tel: 0161 434 4118
Fundraising tel: 0161 443 2200



MEET OUR NEW REGISTERED MANAGER

Sharon Doodson becomes Registered Manager and only the third Director of Care to be appointed in the history of Francis House.

As the new Registered Manager and Director of Care, Sharon Doodson will lead a Hospice Care team of more than 50 staff and will be managing the care at Francis House and Francis Lodge, responsible for all aspects of the Hospice service and clinical oversight of the Residential Care staff.

Sharon said, “I had ideas on how it was going to be taking over as the Registered Manager of Francis House and all that it would entail, but a global pandemic was not on my radar! It has been a very difficult time for Francis House and something that has affected every single person, from families to staff.

“We have adapted and changed the way we normally work to meet government guidelines to ensure the continued safety of the children, young people and the staff.

I am proud to manage such a fantastic team.”

A Registered Nurse, Sharon has worked at Willow Wood Hospice, Accident and Emergency for Pennine Acute Trust and later became a District Nurse for Stockport NHS Foundation. Whilst on the District Nurse Team she became the Palliative Care Link Nurse. Sharon joined the Francis House Team in February 2015 becoming a member of the Senior Team in December and was appointed Clinical Lead in September 2016.

“I knew on my first day working at Francis House that I would spend the rest of my nursing career here. I never expected it would be as the Registered Manager, but I am grateful for the opportunity.

“I do not take the responsibility lightly; I understand the commitment that the job entails, and I am determined to work hard for the families to ensure they continue to receive outstanding care.

“I am passionate about holistic care, as a student nurse you hear so much about holistic care but sadly in a busy NHS environment it is not always possible and can be very frustrating. Within a day of working at Francis House I observed holistic care at its best and I was so excited to be able to work somewhere that had holistic care embedded within its philosophy and ethos.

“Francis House cares for the whole family, not just the sick child, and we are fortunate that we are able to give the quality and time to children and families. I will strive to continue to maintain a safe, effective, individualised caring service, with the needs of the children, young people, and families at the centre of any decisions I make.

“I would like to thank Gill Bevin for all of her support. The groundwork she has put into Francis House has left very strong foundations for me to build on. The Hospice is continuing to grow and expand and I am looking forward to working with David Ireland and developing the hospice further so that we can expand our services and reach out to even more families.”



Sharon Doodson, Registered Manager

CONTINUED...

Sharon took over the role of Registered Manager from Gill Bevin in August. Gill worked alongside Sharon and also helped review the Hospice Policies and Procedures until her final day on the 6th November 2020.

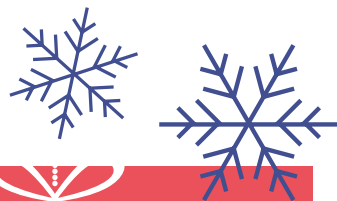
Gill said, "I have worked at Francis House since July 2002. My time on the Care team, with Seasons and on the Homecare team taught me so much professionally and personally and prepared me for the next 11 years as Registered Manager. This role has been the pinnacle of my career and I feel honoured to have played my part in the Francis House history. Sharon will ensure that the future of Francis House is in safe hands. She has more than demonstrated the passion and commitment to take the Hospice forward into its next stages of its growth and development to meet the ever-changing needs of the young people and their families. I wish her every success and happiness in this demanding role."

Chris Roberts, Chairman of the Board of Trustees added: "The Trustees were delighted to appoint Sharon as the new Registered Manager. Sharon has more than demonstrated the skills and abilities needed for the post. Sharon is only the third Director of Care to be appointed in our 30 years of existence. The Trustees are unanimous in their thanks to the retiring Registered Manager, Gill, for her outstanding contribution and personal devotion to the Hospice over the last eighteen years."

Gill Bevin retires after 18 years at Francis House.



FESTIVE EVENTS



FESTIVAL OF TREES

Our Annual Festival of Christmas Trees has extended online for its 14th year.

Discover a festive display of more than 30 magical trees and place a bid on your favourite tree packed with incredible goodies donated by organisations and community groups. Bidding closes on Sunday 13th Dec.

Visit www.festivaloftrees.co.uk

The Festival of Trees pop-up shop and stunning display at Quayside MediaCityUK, Salford Quays, remains ready and waiting for your visit - subject to lockdown restrictions.

In the shop and online you will also find a range of Christmas items and decorations for sale.

Thank you once again to Quayside MediaCityUK for kindly donating the retail unit. **To find out more visit www.festivaloftrees.co.uk or call Julie on 0161 443 2200.**



CHRISTMAS STORY SERVICE

Whilst we can't invite you in person to St Elisabeth's Church, Reddish, this year, we hope that you will still join us in an evening of carols and performance by the choir of St Elisabeth's from the comfort of your own home on Friday 18th Dec.

GLASS SLIPPER BALL

Francis House has teamed up with some of the North West's leading talent to bring you a virtual evening of spectacular entertainment and festive fun from the studios of Stirling Event Group. Join us from 8pm on Saturday 5th Dec for celebrity guest appearances and some fabulous prizes with host DJ Darren Proctor plus an exciting live auction by TV's Charles Hanson. Your £25 entry ticket will automatically enter you into our prize draw to win an exclusive piece of Beaverbrooks jewellery. Booking essential.

For both events please visit our website www.francishouse.org.uk or call Susie on 07931 642409.

PRIDE OF MANCHESTER

DJ and Elvis
showman Jim
has raised
more than
£200,000

Many of you will have heard of our dedicated supporter Jim Nicholas and his incredible achievements. We are thrilled that his charitable fundraising has now been recognised with a prestigious MEN Pride of Manchester Award.

DJ and Elvis showman Jim has raised more than £200,000 during half a century of performing at hundreds of club venues. To show their appreciation fans dig deep and put hundreds of pounds into Jim's collection box.

Jim had thought he was attending a meeting at a hotel to discuss ways of raising money for Francis House - his wife Denise even persuaded him to dress in his Elvis outfit for the occasion. But he was surprised instead to be presented with the award by former singer, Coronation Street star and Pride of Manchester award host Kym Marsh.

Jim said: "It was fantastic to meet Kym. I'm so proud that someone thought about nominating me and I feel very humble to get this award.

"I am hoping that the fundraising has helped the families who come to Francis House and the staff who do a heck of a job to care for them.

"I get a real buzz from performing and a big thrill from getting on that stage. As long as people enjoy themselves - and they must do as



they keep coming back - then I'll keep doing it and raising money for Francis House.

"If I stay in good health, I'd love to continue fundraising and if there are any celebrities and stars out there who would like to help, I would love to hear from them," added Jim.

Coronavirus restrictions ruled out the glittering red carpet evening planned for the MEN Pride of Manchester Awards, in partnership with TSB. The winners were instead honoured in a unique virtual celebration, free for all to watch on Pride of Britain Facebook Live and YouTube.

David Ireland of Francis House said: "What Jim has achieved is phenomenal. He has shown incredible generosity and commitment to Francis House with his fundraising for more than 25 years. I have had the pleasure of knowing Jim for a long time and he lives for doing things for other people. We are thrilled that he has been recognised with this fantastic award."

The Pride of Manchester Awards is available to view on [YouTube](#).



EASTER CHICK UPDATE



This year's Easter Chick Appeal has raised a brilliant £22,600, despite the difficulties presented by the closure of schools and businesses. Thank you to everyone who supported the campaign.

It's now time for knitters to dust off their needles and start knitting once again!

Knitting patterns and further information on how to get involved can be found at www.franchishouse.org.uk/easter-knit-a-chick-appeal or call **0161 443 2200**.

We are especially looking for more schools, shops, cafes and workplaces to jump on board and sell chicks for us. Please let us know if you can help.

KNIT OFF



4 winners!

- 1. Wendy Thompson**
- Mr and Mrs Claus
- 2. Abigail Reece**
- Topsy the triceratops
- 3. Angela Farrell**
- Animals and flowers native to England baby blanket
- 4. Pam Deeran**
- Twinkle Star little boys bunting



£500+ raised

Finalists gallery www.franchishouse.org.uk/knitoff

SEWING TO SAY THANK YOU

Tracey Sutherland has turned her passion for sewing to making face coverings and raised more than £800 for Francis House.

Tracey started making the colourful face coverings in their own scrub bags as part of the Big Community Sew.

The cloth coverings* made using two layers of lightweight cotton are produced sustainably with chiefly left-over material.

“Lots of people don’t realise that they are walking around in face coverings of clothes that I have in my wardrobe. I made my husband Steve a shirt once with musical notes on it and now people are walking around in face coverings that match his shirt!”

The family, including Daniel’s twin Andrew and older brother Matthew, were supported by Francis House for fourteen years.

“We took a lot of convincing to come to a children’s hospice. We didn’t accept that Dan’s condition was life shortening, no matter how

poorly he got he would bounce back a few days later.

“The boys all had fantastic times at Francis House, they used to say we’re going to his holiday home. Daniel passed away in 2011 aged 17, we know that Francis House loved caring for him and this is our way of saying thank you.”

Order a face covering for £5 via www.justgiving.com/fundraising/Traceys-Facecoverings

*A cloth face covering is not medical grade PPE. They are designed to prevent people who have COVID-19, but might not know it, from spreading it to others. Face coverings are not a substitute for other recommended measures to stop the community spread of COVID-19.



Thanks to supporters like you, we have been able to continue to deliver care to children and young people and support their families during the COVID-19 pandemic.

60

sick young people received emergency respite care



353

homecare visits made to family's homes



178

sessions of emotional support



12

new referrals (6 pending)



7

bedrooms converted to COVID-19 safe suites



204

sessions of bereavement support



6000+

calls offering telephone support

"I feel happy in Francis House because it's really fun and everyone helps me a lot if I get bored." Mina

PPE sourced since the start of the pandemic:

113,232

individual items of PPE



15,468

surgical masks

1428

visors



5720

gowns



14,650

aprons



49,450

surgical gloves

2332

bottles of hand gel



2000

packs of anti-bacterial wipes

I want to help the families of Francis House

Here is my gift of:

☐ £10 ☐ £25 ☐ £50 ☐ other £

I enclose a cheque made payable to **Francis House Family Trust**

Title.....First NameLast Name

Address.....

.....Postcode.....

Telephone Number..... Email Address.....



Gift Aid

Boost your donation by 25p of Gift Aid for every £1 donated

giftaid it

I would like Francis House Family Trust to treat as Gift Aid Donations

☐ This donation

☐ All donations I make in the future or have made in the past 4 years

I am a UK taxpayer and understand that if I pay less Income Tax and or Capital Gains Tax than the amount of Gift Aid claimed on all my donations in that tax year, it is my responsibility to pay any difference.

Signature.....Date.....

Keep in Touch

Your support is vital and we look forward to keeping in touch with you by post, sharing our news, activities and appeals.

Would you like to receive our emails too?

☐ Yes, I am happy to hear from you by email.

If you do not wish to receive information by post, or wish to change how we get in touch, please contact rachael.taylor@francishouse.org.uk or call 0161 443 2200.

THANK YOU

Please return this form with your donation to:

Francis House Family Trust, Francis House Children's Hospice,
390 Parrswood Road, Didsbury, Manchester M20 5NA

To donate online go to www.francishouse.org.uk/appeal or call 0161 443 2200

MAKE A REGULAR DONATION

To continue to provide our services we need to raise 4.7 million pounds per year to keep Francis House and Lodge operating.

Become a regular giver and make an ongoing difference to the lives of the families that we support. By completing this form, your regular donation will enable us to plan for future needs. If you are a UK taxpayer, please also sign and return the Gift Aid Declaration.

STANDING ORDER

The Manager

Bank/BSoc Address

.....

Account Name

Account Number

Sort Code

Please pay: Francis House Family Trust

Yorkshire Bank, 45-50 Market Street

Manchester M1 1PW

Account Number 68170373

Sort Code 05-05-73

The sum of £

Commencing on

and thereafter on each succeeding

Ending on

Name

Address

.....

Signature

Date

Please return to Carole Fletcher, Francis House
Children's Hospice, 390 Parrswood Road,
Didsbury, Manchester M20 5NA
Registered Charity No. 328659

GIFT AID DECLARATION

Name of Charity

Details of Donor: Title

Forename(s)

Surname

Address

.....

Postcode

Email

I wish the charity to treat: (please tick as appropriate)

☐ The enclosed donation of £

☐ All donations I make in the future or
have made in the past 4 years

I am a UK tax payer and understand that if
I pay less income Tax and/or Capital Gains
Tax than the amount of Gift Aid claimed
on all my donations in that tax year it is
my responsibility to pay any difference.

Please let us know if you:

- Want to cancel this declaration
- Change your name or home address
- No longer pay sufficient tax on your
income and or capital gains

Signed

Date

THANKS TO YOUR SUPPORT DURING THE CORONAVIRUS CRISIS:

94 JustGiving pages have been created raising more than **£55,000**

148 items have been sold through our ebay shop

£11,150 has been donated through Facebook,

all helping us to continue our vital work



Stephen Bradley

Virtual 40th London
Marathon
£3,000



Cast UK

Yorkshire 3 Peaks
£2,648



Gabi Howarth

Sale of handmade
beaded bracelets
£2,505

THE GREENERY ROOM HEADSHOP, WITHINGTON

TOWERGATE HEALTH & PROTECTION

TRAFFORD HOUSING TRUST

JOHN & ROISIN ANDREW

SAMARA COLLINS

MOLLY JACOBS & BEC DIXON

MORRISONS MANUFACTURING, WORSLEY

THE RANGE

WINTER WANDER



A FRESH AND FROSTY START TO 2021...

Put your best foot forward in 2021 and take part in the first ever Francis House New Year Winter Wander.

Over the first two weeks of January, we are encouraging all ages and abilities to embark on a walk in support of Francis House.

Whether you walk in memory of someone special, in solidarity with somebody receiving care, or simply to show your support for Francis House after a difficult year, your sponsorship and donations will set our New Year fundraising off on the right foot.

We will provide three suggested routes OR you can opt to walk your own route over a distance that suits you best.



Choose from:

Lymm Loop in Cheshire (8 mi.)
Turton Reservoir Round in Bolton (7 mi.)
Saddleworth Circuit in Oldham (8 mi.)



Or choose your own adventure and walk any route or distance!

Sign up now

to receive your Winter Wander fundraising pack.

£10 to register, FREE for under 16s

www.francishouse.org.uk/winter-wander

or call Rachel on 0161 443 2200

Mailing List

If you no longer wish to receive a copy of the newsletter through the post, please call the fundraising office on 0161 443 2200 or email rachael.taylor@francishouse.org.uk to be removed from the mailing list. Our newsletters are available to view online www.francishouse.org.uk/news/newsletters/



@FrancisHouseCH



FrancisHouseChildrensHospice



www.francishouse.org.uk